

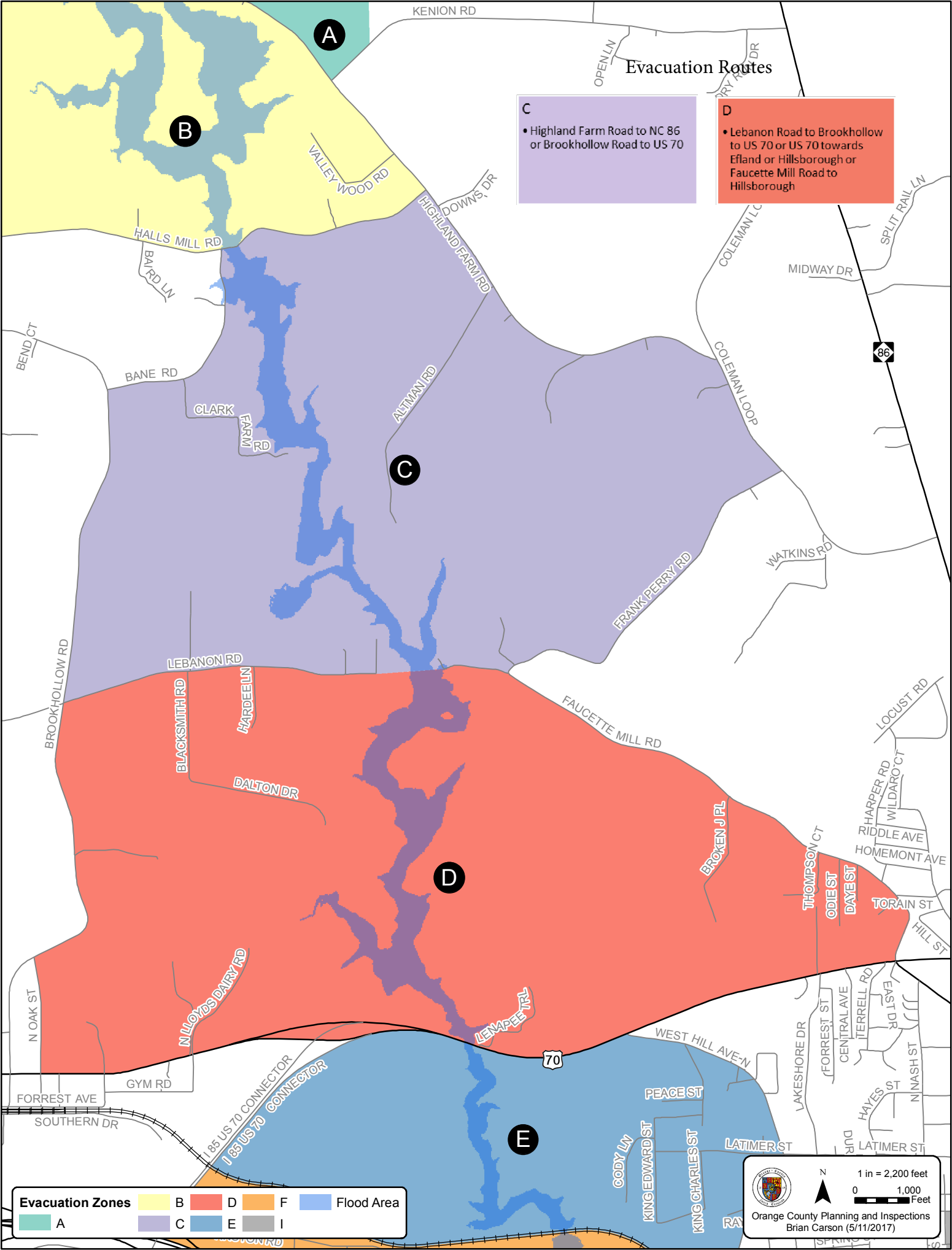
Evacuation Routes

C

- Highland Farm Road to NC 86 or Brookhollow Road to US 70

D

- Lebanon Road to Brookhollow to US 70 or US 70 towards Efland or Hillsborough or Faucette Mill Road to Hillsborough



Evacuation Zones	
 A	 B
 C	 D
 E	 F
 I	 Flood Area

1 in = 2,200 feet
 0 1,000 Feet

Orange County Planning and Inspections
 Brian Carson (5/11/2017)