

Agenda Item Number:

**ORANGE COUNTY BOARD OF HEALTH
AGENDA ITEM SUMMARY**

Meeting Date: 6/26/2019

Agenda Item Subject: Formerly Incarcerated Transition Program (FIT)

Attachment(s): FIT Presentation

Staff or Board Member Reporting:

Purpose: ___ Action
 ___ **x** Information only
 ___ Information with possible action

Summary Information:

Update on Formerly Incarcerated Transition Program by Tommy Green. Updates will include successes, challenges, expansion, and case load.

Recommended Action: ___ Approve
 ___ Approve & forward to Board of Commissioners for action
 ___ Approve & forward to _____
 ___ Accept as information
 ___ Revise & schedule for future action
 ___ Other (detail):

Formerly Incarcerated Transition Program

Michael DeFranco, MPH – Public Health
Services Manager
Henry “Tommy” Green, NCPSS –
Community Health Worker



ORANGE COUNTY
HEALTH DEPARTMENT

Improving health. Inspiring change.

FIT Program – Formerly Incarcerated Transition Program

- The FIT Program is designed to connect formerly incarcerated people with chronic illness to health care services.
- Community Health Worker from the FIT program will work to connect the participant to appropriate health services.
- Other community re-entry resources are made available to help with a comprehensive re-entry plan

How was it formed?

A green rounded rectangular box containing a handwritten signature in black ink that reads "James R. Duke".

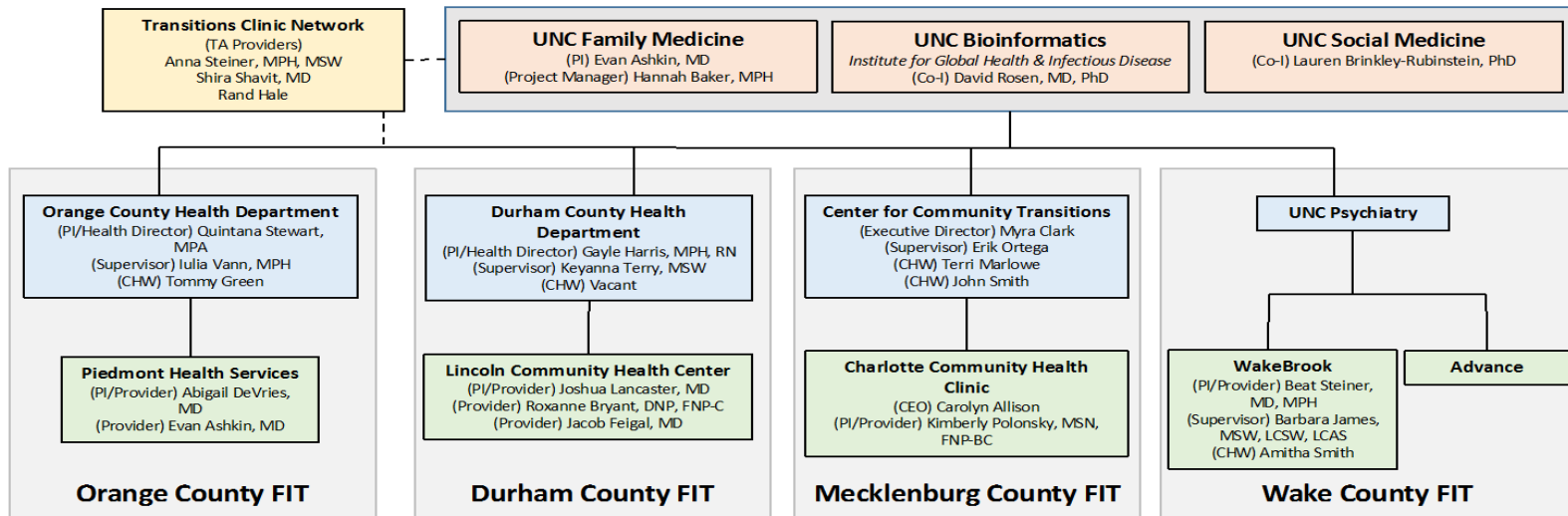
THE DUKE ENDOWMENT

- Initial seed grant from NC DPH to partially fund CHW hire by Durham Health Department.
- Further funding from the Duke Endowment to secure 3 years of support in Durham and add a second CHW in Orange County.
- Further expansion to Wake and Mecklenburg



NC FIT Program

North Carolina FIT Program



Burden of Disease

- Study of 1,100 people returning home = 80% men and 90% of women had a chronic disease that required management
- High percentage of:
 - > Heart failure
 - > Diabetes
 - > Kidney disease
 - > Serious life-limiting diseases
 - > Dementia
 - > HIV, Tuberculosis, and Hepatitis C



Challenges

- Homelessness
- No source of income
- Food insecurity
- Recidivism
- Hopelessness
- Other medical problems: anxiety, depression, bipolar disorder, PTSD, Schizophrenia, hypertension, asthma, seizures

PROGRAM RELATED

- NC Medicaid Non Expansion
- People coming from incarceration are uninsured
- Linkages to stable Housing
- Lack of MH/SU Treatment
- Identifying people that would benefit from FIT

Current Case Load Report

- Total number of clients 32 (25 active)
- Recidivism rate – 15.4% (compared to state average of 40%) **
- Number of overdoses – 0
- Chronic disease stable at the time of report - 100%

Case Study 1

- Initial Contact - Met client during a visit to the Inter-Faith Council while doing outreach in the community.
- History before F.I.T - In and out of incarceration (County Jails and State prison) last 5 years. Suffered from severe alcoholism. Never took medications on a consistent basis.
- Diagnoses - Bipolar Disorder, Schizophrenia, Manic Depression, Substance abuse disorder

Case Study 1 – Cont.

○ Goals met through FIT :

- › Photo ID
- › SS card and benefits
- › Accepted into an Oxford House
- › Substance abuse programs (NA, AA)
- › Private Sessions with Psychiatrist (pro bono)
- › Community Resource Court hearings
- › Found employment.

○ Challenges

- › Oxford House was not a good fit for the client
- › One substance abuse relapse.

Case Study 2

- Initial Contact – Client got CHW's contact info off a flyer at CEF (Community Empowerment Fund) and reached out.
- History before F.I.T – In and out of incarceration (County Jails and State prison) last 3 years. Suffered from severe alcoholism (long history of DWIs) and opioid (heroin) abuse.
- Diagnoses – Manic Depression, Substance abuse disorder, Hepatitis C, Pregnant

Case Study 2 – Cont.

- Goals met through FIT
 - › Prenatal Care
 - › Substance abuse programs (NA, AA)
 - › Housing
 - › Tobacco cessation counseling (nicotine patches, gum)
 - › G.E.D
 - › Psychiatrist for private therapy sessions
- Challenges
 - › Several DWIs -> challenging to get a Driver's License
 - › Housing due to her criminal record

New Partners

- ◉ Orange County Local Reentry Council
(Chairman – Housing and Health
Subcommittees)
- ◉ Community Empowerment Fund (CEF)
- ◉ NCWorks
- ◉ Interfaith Council (IFC)
- ◉ Dr. Price

Onboarding from Inside

- ◉ Orange County Correctional
- ◉ Wake County Correctional
- ◉ Orange County Jail

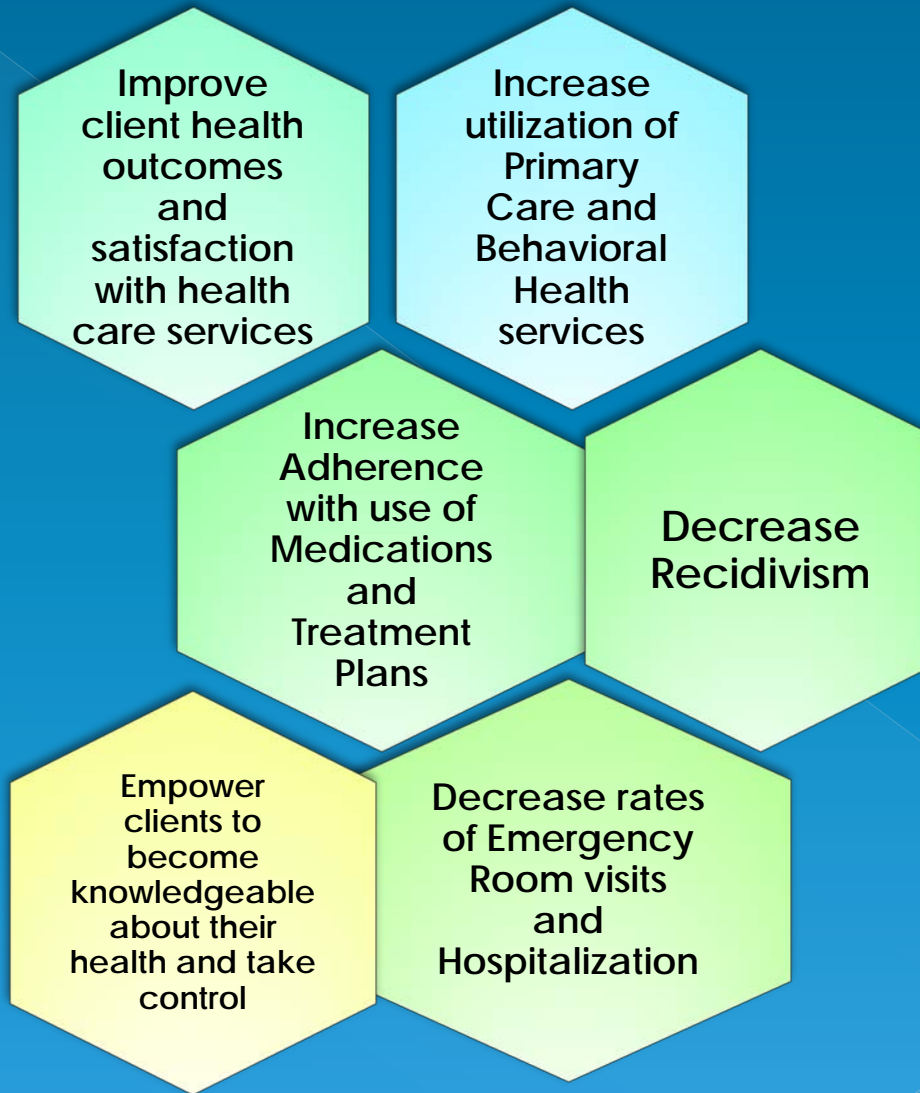


Eligibility Criteria

1. Orange County Resident – due to county funds
2. Recently released from prison or jail – the last 2 years
3. Diagnosed with a Chronic Illness to include Mental Health and Substance Use/Misuse



FIT Desired Outcomes



Future for FIT

- By 2020 County Funds will represent 100% of the funding for the Program which demonstrates the commitment that the leadership is doing for this program.
- The Governor's Reentry Council has taken a special interest in the FIT program and we are expecting this program to be included on the Final Reentry Report as a top recommendation for the Statewide Reentry Effort.
- *FIT study has officially launched*
- ***Orange County FIT CHW to be lead FIT CHW for NC***

Questions

